

2

Water and electricity



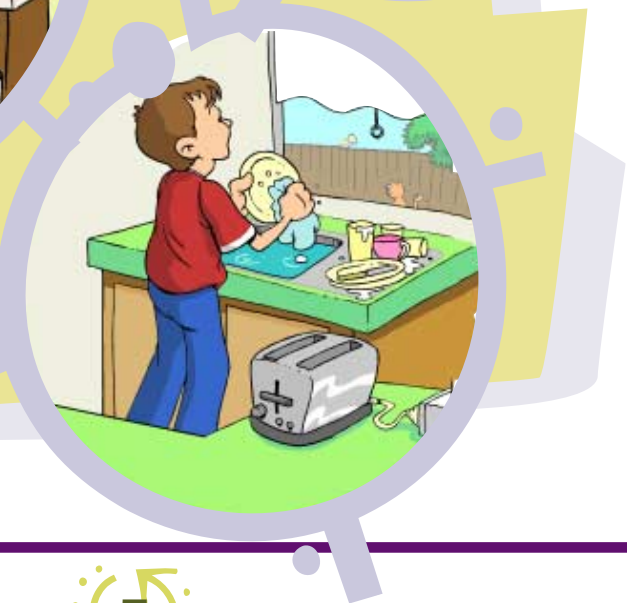
Electricity travels through electrical wires, cords, switches and plugs. It can also travel through water.



You must never touch electrical switches with wet hands and be careful when you use electrical appliances near water.

Electricity can flow from the appliance to your wet hands and into your body.

The people in these pictures are using electricity safely.



2

Circle the safer power point in each picture.
Draw an electrical appliance plugged into it.



2

Some electrical appliances such as jugs and washing machines are made especially for using with water, but you always need to be careful.



Don't touch anything and call an adult if this happens . . .



**Where is water used in your house?
How can you make sure you and your family
use electricity safely?**

Water and electricity don't mix.